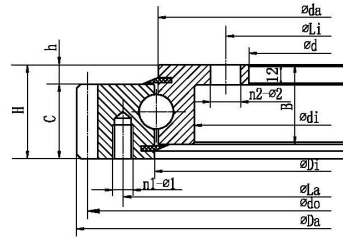


# Four point contact ball slewing bearing (with inner flange and external gear type)



Подшипник		Rothe Erde Model	TG Model	Граничные размеры (мм)		Bolt hole diameter (mm)										Structure dimensions (mm)										Gear Parameters (mm)					Basic load rating Coa (kN)	Вес (кг)
Модель	INA Model			Да	Д:	ди	ЧАС	Ла	Ли	n1	n2	φ1	φ2	D1	д:	б	час	Б:	С	Ди	да	м	г	дельта	Икс							
SLOR20/414Y	VLA200414N ZT			503.3	304	56	455	332	10	12	M12	φ18	480	369.5	40	8.5	47.5	44.5	415.5	412.5	5	99	495	600	31.2							
SLOR20/414	VLA200414N			503.3	304	56	455	332	10	12	M12	18	480		40	11.5	47.5	44.5	415.5	412.5	5	99	495	295	29.5							
SLOR20/414Y1		231.20.0400.013		504	304	56	455	332	10	12	M12	18			45.5	10.5	45.5	45.5	415.5	412.5	5	99	495	250	29.3							
SLOR20/414Y2		231.20.0400.503		504	304	56	455	332	10	24	M12	18			45.5	10.5	45.5	45.5	415.5	412.5	5	99	495	250	29							
SLOR20/414			E.505.20.00.C	504	304	56	455	332	10	12	M12	φ18		375	46	10	46	46	415.5	412.5	5	99	495	500	33.3							
SLOR20/414A			E.505.20.C	504	304	56	455	332	10	12	M12	φ18		373	46	10	46	46	415.5	412.5	5	99	495	640	34							
SLOR20/505				505	304	56	455	332	10	12	M12	φ18		368	56	10	46	46	413	409	5	99	495	470	32							
SLOR20/414Y3		231.21.0475.013		504	305	56	455	332	10	12	M12	18			45.5	10.5	45.5	45.5	417	412.5	5	99	495	250	29.3							
SLOR20/544Y	VLA200544N ZT			640.3	434	56	585	462	14	14	M12	φ18		502	44.5	11.5	44.5	44.5	545.5	542.5	6	105	630	670	41.5							
SLOR20/544Y1	VLA200544N ZT			640.3	434	56	585	462	14	14	M12	φ18		499.5	44.5	8.5	47.5	44.5	545.5	542.5	6	105	630	790	41.6							
SLOR20/544Y4	VLA200544N			640.3	434	56	585	462	14	14	M12	18			44.5	11.5	47.5	44.5	545.5	542.5	6	105	630	385	41.5							
SLOR20/544Y3		231.20.0500.013		640.8	434	56	585	462	14	14	M12	18			45.5	10.5	45.5	45.5	545.5	542.5	6	105	630	330	39.5							
SLOR20/544Y5		231.20.0500.503		640.8	434	56	585	462	14	28	M12	18			45.5	10.5	45.5	45.5	545.5	542.5	6	105	630	330	39.2							
SLOR20/544			E.650.20.C	640.8	434	56	585	462	14	14	M12	φ18		505	46	10	46	46	545.5	542.5	6	105	630	670	40.6							
SLOR20/544B		231.20.0500.503		640.8	434	56	585	462	14	28	M12	φ18		505	45.5	10.5	45.5	45.5	545.5	542.5	6	105	630	660	40.6							
SLOR20/544Y2		231.21.0575.013		640.8	435	56	585	462	14	14	M12	18			45.5	10.5	45.5	45.5	547	542.5	6	105	630	330	39.5							
SLOR20/643				742	534	56	685	562	16	16	M12	φ18		598	46	10	46	46	645	641	6	122	732	740	51.4							
SLOR20/644Y	VLA200644N ZT			742.3	534	56	685	562	16	16	M12	φ18		599.5	44.5	8.5	47.5	44.5	645.5	642.5	6	122	732	900	50							
SLOR 20/644Y1	VLA 200644N			742.3	534	56	685	562	16	16	M12	18			44.5	11.5	47.5	44.5	645.5	642.5	6	122	732	455	48.5							
SLOR20/644Y2		231.20.0600.013		742.8	534	56	685	562	16	16	M12	18			45.5	10.5	45.5	45.5	645.5	642.5	6	122	732	390	47.6							
SLOR20/644Y3		231.20.0600.503		742.8	534	56	685	562	16	32	M12	18			45.5	10.5	45.5	45.5	645.5	642.5	6	122	732	390	47.2							
SLOR20/644			E.750.20.00.C	742.8	534	56	685	562	16	16	M12	φ18		605	46	10	46	46	645.5	642.5	6	122	732	780	55.1							
SLOR20/644Y4		231.21.0675.013		742.8	535	56	685	562	16	16	M12	18			45.5	10.5	45.5	45.5	647	642.5	6	122	732	390	47.6							
SBI-287				744	535	58	685	562	16	12	M12	M12		600	46	12	46	46	643	642	6	122	732	333	54.7							
SLOR20/744Y	VLA200744N ZT			838.1	634	56	785	662	18	16	M12	φ18		699.5	44.5	8.5	47.5	44.5	745.5	742.5	6	138	828	1050	56							
SLOR 20/744Y2	VLA 200744N			838.1	634	56	785	662	18	16	M12	18			44.5	11.5	47.5	44.5	745.5	742.5	6	138	828	530	54.5							
SLOR20/744Y3		231.20.0700.013		838.8	634	56	785	662	18	16	M12	18			45.5	10.5	45.5	45.5	745.5	742.5	6	138	828	450	53.5							
SLOR20/744Y1		231.20.0700.503		838.8	634	56	785	662	18	32	M12	18			45.5	10.5	45.5	45.5	745.5	742.5	6	138	828	450	53.1							
SLOR20/744			E.850.20.00.C	838.8	634	56	785	662	18	16	M12	φ18		705	46	10	46	46	745.5	742.5	6	138	828	910	60							
SLOR20/743				840	634	56	785	662	18	16	M12	φ18		698	46	10	46	46	745	741	6	138	828	840	57.7							