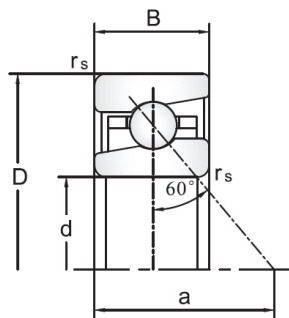


TAC/BS series Ball Screw Support Bearings



| Подшипники | | Demension [mm] | | | | | Load Ca (N) | Rotation [min ⁻¹] | | Stiffness (DB,DF) (N) | Rigidity (DB,DF) (N/μm) | Torque (N·m) | Масса |
|------------|-----------|----------------|-----|----|-------|--------|-------------|-------------------------------|-------|-----------------------|-------------------------|--------------|-------|
| BS | TAC | д: | Д: | Б: | r Min | r1 Max | | Lub. | Масло | ЧАС | ЧАС | ЧАС | KG |
| BS1574 | 15TAC47C | 15 | 47 | 15 | 1 | 0.6 | 23 | 6900 | 9200 | 1450 | 630 | 0.09 | 0.146 |
| BS1747 | 17TAC47C | 17 | 47 | 15 | 1 | 0.6 | 23 | 6900 | 9200 | 1450 | 630 | 0.09 | 0.14 |
| BS2047 | 20TAC47C | 20 | 47 | 15 | 1 | 0.6 | 23 | 6900 | 9200 | 1450 | 630 | 0.09 | 0.135 |
| BS2562 | 25TAC62C | 25 | 62 | 15 | 1 | 0.6 | 29.9 | 5200 | 6900 | 2280 | 850 | 0.15 | 0.252 |
| BS3062 | 30TAC62C | 30 | 62 | 15 | 1 | 0.6 | 30.5 | 4900 | 6400 | 2400 | 890 | 0.16 | 0.224 |
| BS3572 | 35TAC72C | 35 | 72 | 15 | 1 | 0.6 | 32.5 | 4100 | 5800 | 2750 | 1030 | 0.18 | 0.31 |
| BS4072 | 40TAC72C | 40 | 72 | 15 | 1 | 0.6 | 33.5 | 4100 | 5500 | 2860 | 1080 | 0.19 | 0.275 |
| BS4090 | 40TAC90C | 40 | 90 | 20 | 1 | 0.6 | 62 | 3500 | 4600 | 3450 | 1150 | 0.29 | 0.674 |
| BS4575 | 45TAC75C | 45 | 75 | 15 | 1 | 0.6 | 34.5 | 3700 | 4900 | 3100 | 1170 | 0.2 | 0.27 |
| BS45100 | 45TAC100C | 45 | 100 | 20 | 1 | 0.6 | 64.5 | 3000 | 4100 | 4440 | 1340 | 0.4 | 0.842 |
| BS50100 | 50TAC100C | 50 | 100 | 20 | 1 | 0.6 | 66 | 3000 | 3900 | 4650 | 1410 | 0.42 | 0.778 |
| BS55100 | 55TAC100C | 55 | 100 | 20 | 1 | 0.6 | 66 | 3000 | 3900 | 4650 | 1410 | 0.42 | 0.714 |
| BS55120 | 55TAC120C | 55 | 120 | 20 | 1 | 0.6 | 70.5 | 2500 | 3500 | 5450 | 1660 | 0.49 | 1.23 |
| BS60120 | 60TAC120C | 60 | 120 | 20 | 1 | 0.6 | 70.5 | 2500 | 3500 | 5450 | 1660 | 0.49 | 1.16 |